

# For Lease 5± Acres

E Rochembeau Drive, Williamsburg, VA 23188



**GRUBB & ELLIS**  
Harrison & Bates

Ground Lease



# For Lease

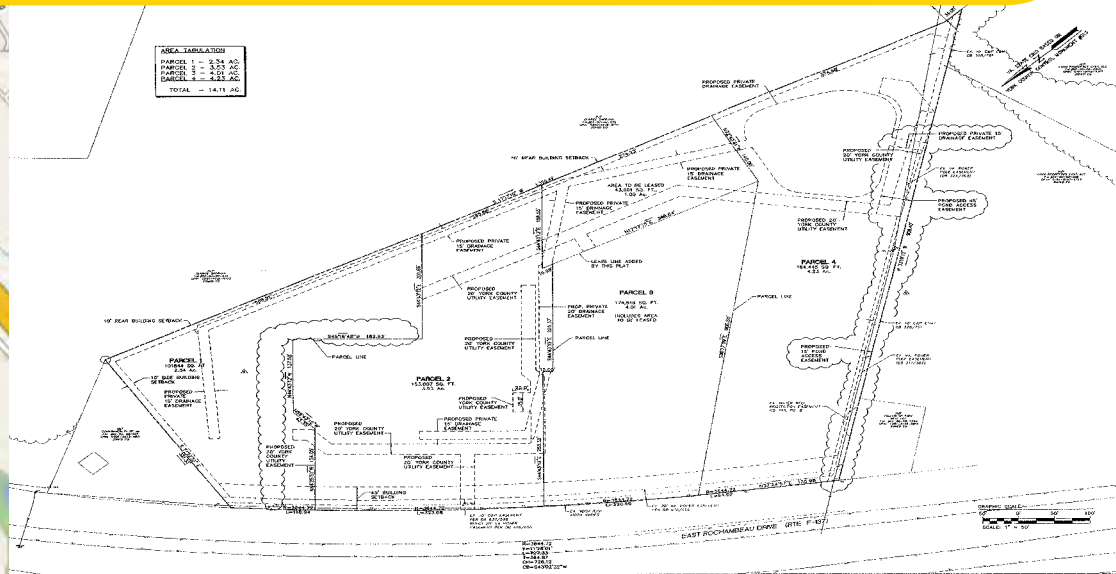
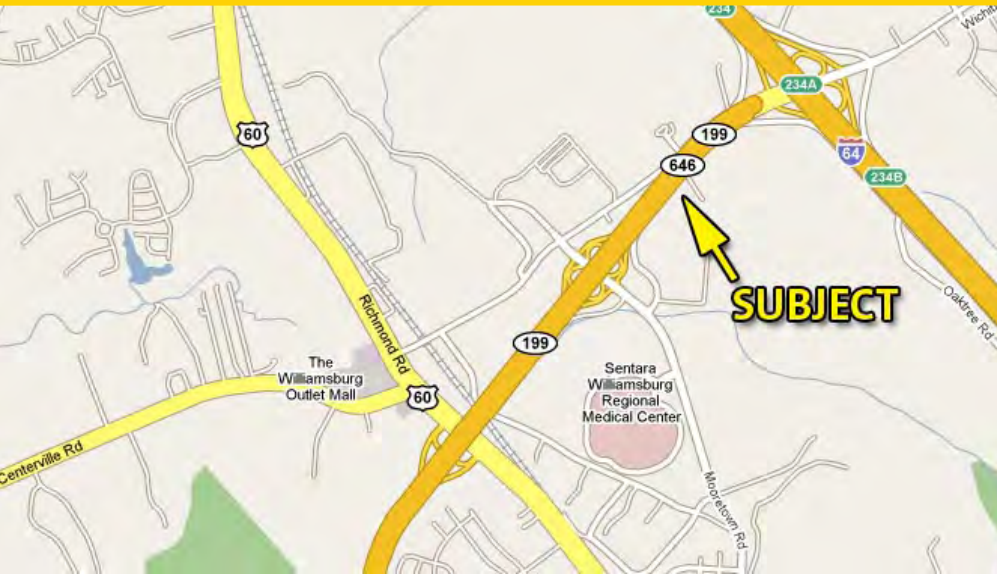
## 5± Acres

E Rochambeau Drive, Williamsburg, VA 23188



**GRUBB & ELLIS**  
Harrison & Bates

York County



### Features

- 5± Acres available for ground lease
- Can be divided
- Great access to I-64 at the Route 199 and Mooretown Road Interchange
- In a prime location next to: Wal-Mart, Lowes and The Great Wolf Lodge

### Demographics

	1 mile	3 mile	5 mile
Population	5,854	22,709	48,965
Median Household Income	\$56,238	\$60,969	\$62,505
Williamsburg Trade Area	105,000		

To learn more, please contact:

Grubb & Ellis|Harrison & Bates  
6606 W Broad Street  
Suite 400  
Richmond, VA 23230  
804.788.1000 main  
804.782.1145 fax  
[www.harrison-bates.com](http://www.harrison-bates.com)

**Frank Galleher**  
Senior Associate  
804.591.2430 direct  
frank.galleher@harrison-bates.com

**Jason Bernstein**  
Associate  
804.591.2408 direct  
jason.bernstein@harrison-bates.com