

For Sale

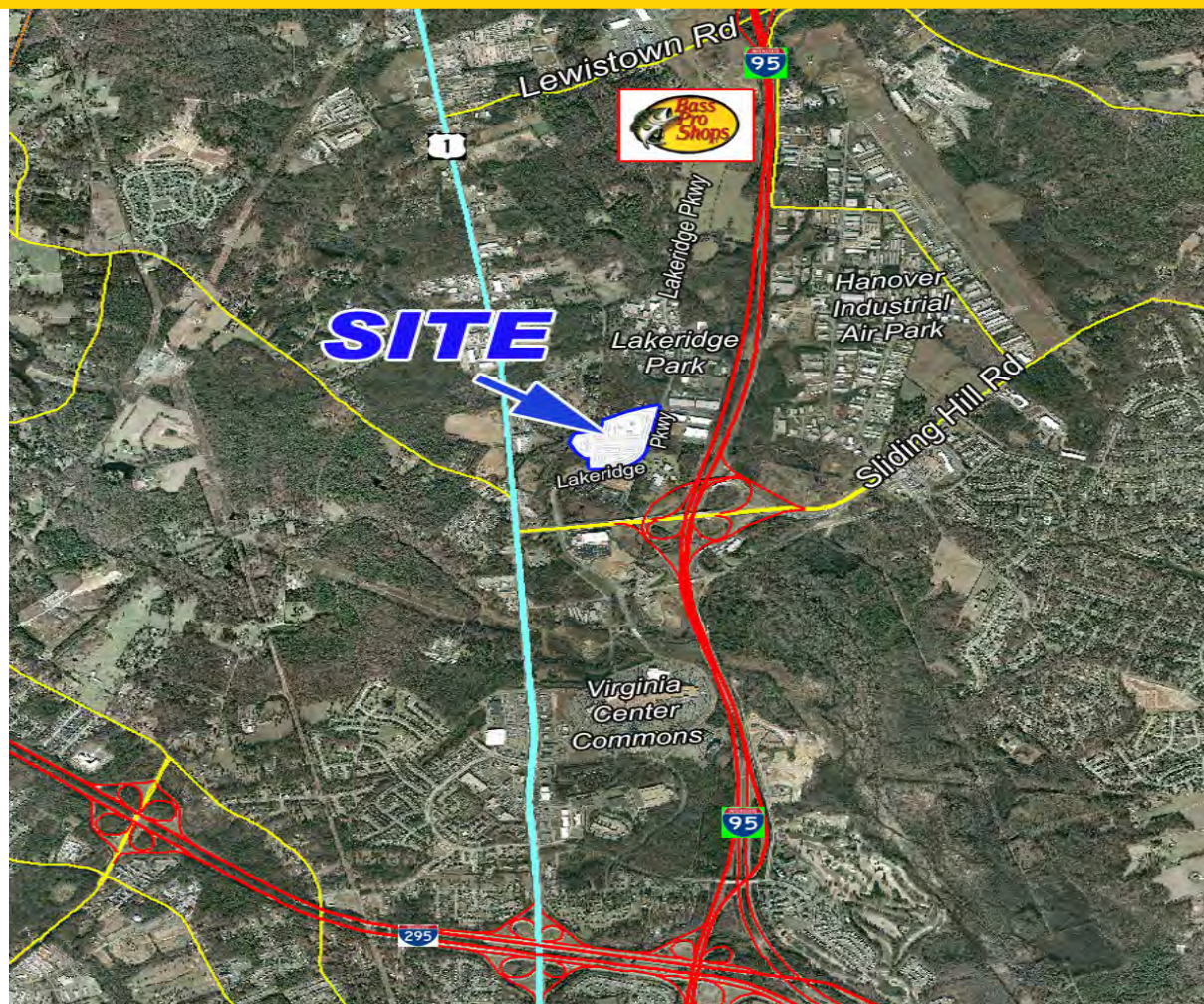
10383 Lakeridge Parkway

Ashland, Virginia 23005



www.harrison-bates.com

County of Hanover



Features

- 27± acres ½ mile to the Atlee/Elmont interchange (Exit 86 I-95), 3 miles to the Lewistown Road interchange (Exit 89 I-95) and 1½ miles to I-95/I-295 crossroads
- Zoned M-1 for wide variety of uses; all utilities at site, adequate parking to accommodate variety of office, service, distribution, medical/professional and quasi-retail uses
- Price: \$82,000 per acre

To learn more, please contact:

Grubb & Ellis|Harrison & Bates
6606 W Broad Street
Suite 400
Richmond, VA 23230
804.788.1000 main
804.782.1145 fax
www.harrison-bates.com

David Williams, SIOR, CCIM
Managing Director
804.591.2405 direct
david.williams@harrison-bates.com

Bill Mattox, SIOR
Senior Vice President
804.591.2428 direct
bill.mattox@harrison-bates.com

Stuart Cary, SIOR
Senior Vice President
804.591.2400 direct
stuart.cary@harrison-bates.com

For Sale

10383 Lakeridge Parkway

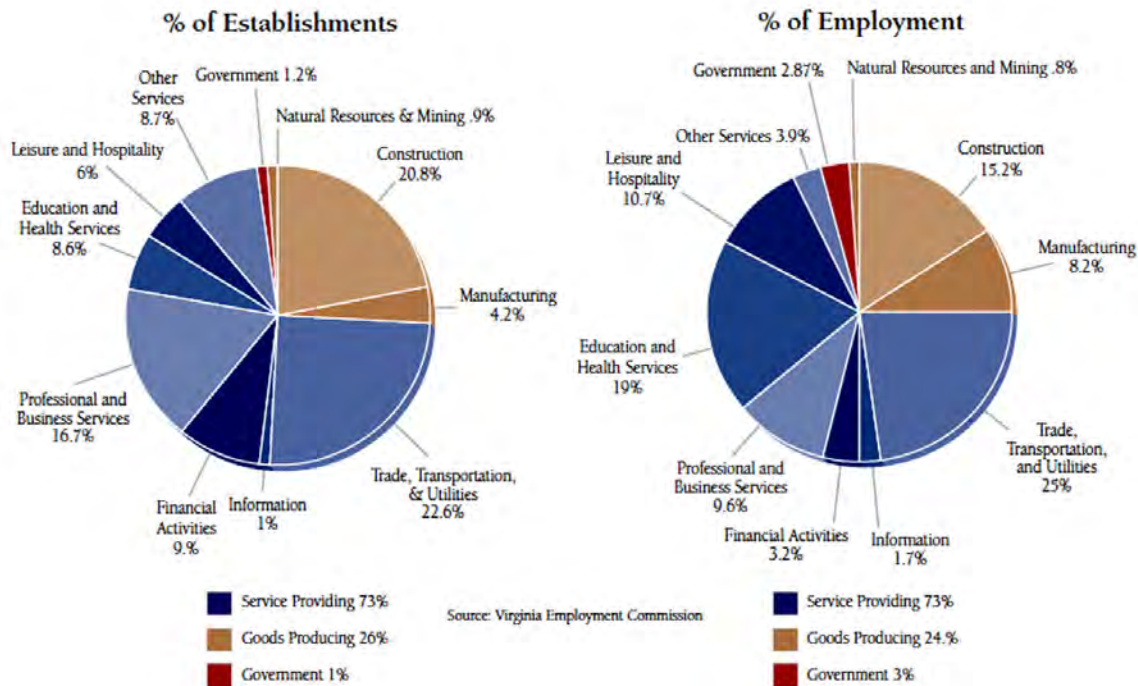
Ashland, Virginia 23005



www.harrison-bates.com

County of Hanover

Percentage of Establishments & Employment by Industry Sector 2007



GENERAL ADVANTAGES

- Greater Richmond's growing population exceeds 1,200,000. The area is a magnet for labor, drawing workers from more than 40 localities statewide.
- The Richmond region's diverse economy includes 12 Fortune 1000 headquarters; pharmaceutical, chemical, biotech, semiconductor, and other 21st century manufacturers; financial and information technology services; and higher education.
- The area's telecommunications infrastructure is state-of-the-art with an extensive fiber optic network and digital switching capability.
- Sites and buildings are available, including fast tract sites ready to go for semiconductor, life sciences, and other technology projects.